

# PrO-Research

a division of

**CENTURION**  
SCIENTIFIC LIMITED

## Micro centrifuge range

LCD touch screen control panel



**Research,  
Pharmaceuticals  
& Universities**

2022.2

# Control by LCD touch screen

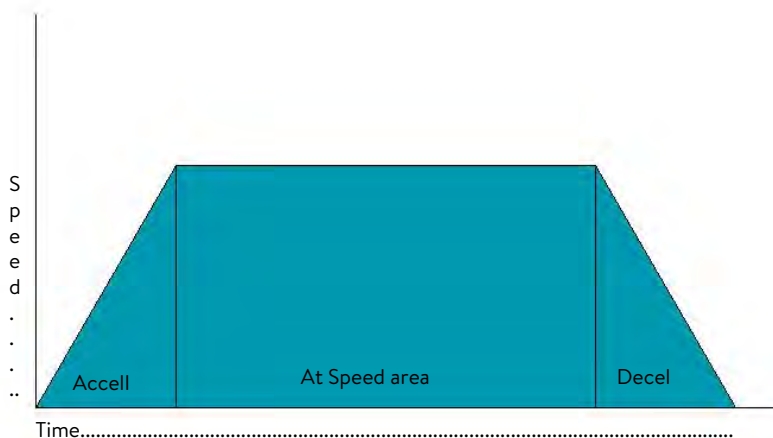


Overlay colour  
Teal for 2020 models

Ambient model shown  
Refrigerated similar with  
temperature area added

## W2t as standard to all models

Best method of centrifugation Rcft (also known as W2t) was only available to Ultracentrifugation



The most accurate way of Centrifugation is a standard feature to all Research models This method incorporates the Acceleration, at speed and Deceleration rates You simply set the Rcft and go every analysis thereafter will be exactly the same even if you decide to change either the acceleration rate or Deceleration rate In fact you can change any value and retain the same This allows changes to make sample collection at its best

# PrO-Research Centrifuge Features

Built to last, these Centrifuges have strong construction yet, offer a sleek modern design that will fit into any modern laboratory.

No compromises on quality, only the best components are used in the manufacturing process.

By working with all our suppliers, our reliability has been retained and improved to give all our range a 2 year warranty as standard.



CE marked and ISO 9001 & 13485

User features to PrO-Analytical series	Advantages
LCD touch screen control	Clarity & ease of use
Rotor recognition	Safe selection of rotors
10 acceleration rates & 10 deceleration rates	Sample assistance
99 program memory	Multi department & Users
Timer 0-99, Hours & Hold in 1 second increments	Total flexibility
Pulse short run	Fast pelleting
Run in speed (rpm) or rcf (G) in 10 rpm increments	Accuracy
Orientation acceleration rate	Prevents initial sample side deposits
Sound <60db (rotor dependent)	Quiet

Standard features to PrO-Analytical series	Advantages
Extra thick stainless steel bowl or acrylic	Easy clean & rust free
Port to lid	Tachometer speed certification
Alloy & steel frame (zinc coated)	Strong light & quiet
World leading industrial grade inverter	Reliability & strength
Best quality European brushless motor	Quiet, cool & reliable
High technology airflow (ambient mode)	Cooler running

All centrifuges have user accessible service sections to access all safety parameters

Safety features to PrO-Analytical series	Advantages
Multi point lid locking	Lid safety
Emergency lid release	Power failure release
Lid Spring Strut	Lid dropping safety
Lid lock detection	To run, lid must be shut
Imbalance detection	Stops the run if out of balance
Overspeed sensor	Safe detection of speed
Set inverter values	Electronic safety of speed
Barrier ring	Safety protection of chamber
Motor overheat sensor	Safe motor protection

Centurion Scientific Ltd Centrifuges comply to all relevant EU standards of quality and medical devices IEC 61010 and CE conformity test marks emission, immunity to EN/IEC 61326-1, Class B

## 4 Micro Centrifuges to 0.2Litre max

### Prime multi rotor Centrifuge

Display indicative only

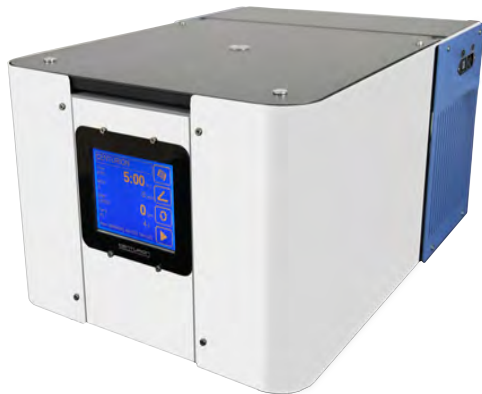


#### PART NUMBERS

K1015 (230V50/60Hz)  
1.K1015 (110V 60Hz)

**(Rotor required)** see the following pages

Display indicative only



#### PART NUMBERS

K1015R (230V 50/60Hz)  
1. K1015R (110V 60 Hz)

**(Rotor required)** see the following pages

See pages 12-13 for Dual (single rotor models) complete

#### Ambient Centrifuge

<b>Speed</b>	15,000 Rpm max (1 Rpm steps)
<b>Rcf Max</b>	10 - 22,000G
<b>Timer</b>	0-99hours & Hold (1 sec steps)
<b>Dims HWD</b>	280 x 240 x 360mm
<b>Weight</b>	12.8 Kg (without rotor)
<b>Power</b>	125 Watts
<b>Memory</b>	99 programs
<b>Accel rates</b>	10 programs
<b>Decel rates</b>	10 programs

#### Refrigerated Centrifuge

<b>Speed</b>	15,000 Rpm max (1 Rpm steps)
<b>Rcf Max</b>	10 - 22,000G
<b>Timer</b>	0-99hours & Hold (1 sec steps)
<b>Dims HWD</b>	320 x 280 x 575mm
<b>Weight</b>	41.8 Kg (without rotor)
<b>Power</b>	575 Watts
<b>Memory</b>	99 programs
<b>Accel rates</b>	10 programs
<b>Decel rates</b>	10 programs
<b>Temp range</b>	-10C to 40C PID controlled to +/- 1C



# Micro rotors to 22,000 Rcf (G)

5



Sealed lid included

## Reducers pack of 4

<b>Rotor</b>	BRK5424, BRK5463, BRK5464
<b>Part number</b>	RS04 (0.2- 0.4ml)
<b>Tube size max</b>	6 x 30mm
<b>Part number</b>	RS05 (0.5ml)
<b>Tube size max</b>	8 x 30mm

Rotor	BRK5424	BRK5436	BRK5448	BRK5494
Rotor type	24 x 2.0ml	36 x 0.5ml	48 x 0.2 to 0.4ml	4 x Pcr Strips
Tube size max	11 x 40mm	8 x 30mm	6 x 40mm	6 x 40mm
Minimum Rcf (G)	10	10	10	10
Maximum Rcf (G)	22,000	22,000	22,000	22,000
Maximum Rpm	15,000	15,000	15,000	15,000
Radius max cms	8.75cms	8.75cms	8.75cms	8.75cms
Sample tube angle °	45	45	45	45
Acceleration time (secs)	15	15	15	15
Deceleration time (secs)	15	15	15	15
Autoclavable (frequency)	121°C (10)	121°C (10)	121°C (10)	121°C (10)
Minimum Temperature @ 23°C	4°C	4°C	4°C	4°C

Rotor	BRK5463	BRK5464
Rotor type	36 x 2.0ml	18 x 2.0 & 18x 0.5ml
Tube size max	11 x 40mm	11 x 50 & 8 x 30mm
Minimum Rcf (G)	10	10
Maximum Rcf (G)	22,000	22,000
Maximum Rpm	15,000	15,000
Radius max cms	8.75cms	8.75cms
Sample tube angle °	45	45
Acceleration time (secs)	15	15
Deceleration time (secs)	15	15
Autoclavable (frequency)	121°C (10)	121°C (10)
Minimum Temperature @ 23°C	4°C	4°C

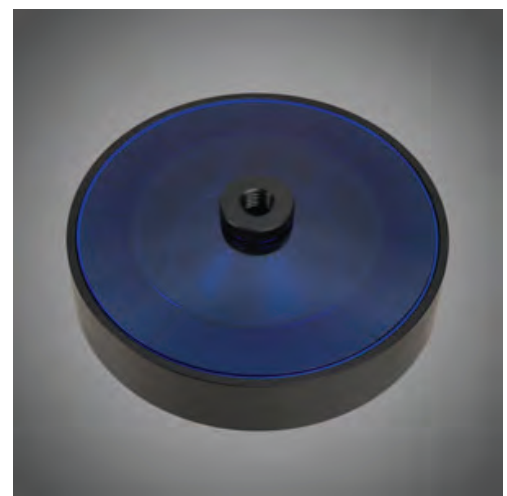
High dome Sealed Lid available Part number B5424SL  
Accepts 2ml tubes to 50mm high



# 6 Haematocrit & Micro rotor to 15,800 Rcf (G)

PCVs for SCBU, Anemia & Vets,

Rotor	BRK5401
Rotor type Tube size max	24 x capillary & 12 x 2ml
Tube size	2 x 75mm & 11 x 40mm
Minimum Rcf (G)	10
Maximum Rcf (G)	15,800
Maximum Rpm	13,000
Radius max cms	8.4
Sample tube angle °	0 & 60
Acceleration time (secs)	25
Deceleration time (secs)	25
Autoclavable (frequency)	121°C (10)
Minimum Temperature @ 23°C	4°C



## Consumables

Part Number	Description
8012	Plain capillary tubes pack 10 x 100
8013	Heparinised capillary tubes pack 10 x 100
8014	Sealing clay Pk 10
8011	Rim seal gasket Pk 10 <a href="#">Replace regularly every 2 months</a>

## Accessories

Part Number	Description
8003	PCV reader

# Small Fixed angle rotors. 3,500 & 6,100 Rcf (G)

7

Blood. Urine, Faeces & larger sample use



Rotor	BRK5407	BRK5408	BRK5404
Rotor type	4 x 15ml & 4 x 10ml	8 x 15ml tube	4 x 50ml tube
Tube size max	17 x 120mm & 13 x 110mm	17 x 120mm	30 x 115mm
Minimum Rcf (G)	10	10	10
Maximum Rcf (G)	6,100	3,500	3,500
Maximum Speed	8,000	6,000	6,000
Radius max cms	8.5	8.5	8.5
Sample tube angle °	30	30	30
Acceleration time (secs)	25	25	25
Deceleration time (secs)	25	25	25
Autoclavable (frequency)	121°C (10)	121°C (10)	121°C (10)
Minimum Temperature @ 23°C	4°C	4°C	4°C

See the following pages for reducers, allowing a vast range of tube use ability



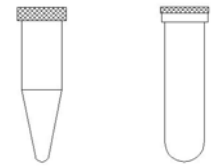
Sealed lid available, use in refrigerated model only  
Part number B524SL

## Reducers Fixed angle rotor BRK5408 Pack of 4 (Tubes per rotor 8)

**Capacity**                      **Size. mm**                      **Part Number**    **Rcf (G) max**

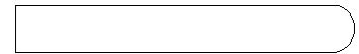
**Tube type: Micro with cap. Shape: Point**

0.2ml	6 x 20	RS.620	2250
0.4ml	6 x 30	RS.630	2410
0.5ml	8 x 20	RS.820	2250
1.5ml	11 x 38	RS.1138	2540
2.0ml	11 x 38	RS.1138	2540



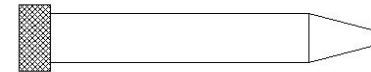
**Tube type: Plain no cap. Shape: Round**

1ml	6 x 45	RS.645	2660
3ml	10 x 60	RS.1060	2940
5ml	12 x 75	RS.1275	3180
6ml	12 x 82	RS.1282	3300
7ml	12 x 100	RS.12100	3500
9/10ml	14 x 100	RS.14100	3500
15ml	17 x 100	Not required	3500



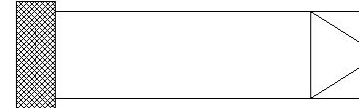
**Tube type: Falcon with cap. Shape: Point**

15ml	17 x 120	Not required	3500
------	----------	--------------	------



**Tube type: Falcon with cap. Shape: Square**

12ml	17 x 100	Not required	3500
15ml	17 x 120	Not required	3500



**Tube type: Nalgene. Oakridge with cap. Shape: Round**

10ml	15 x 80	RS.1580	3500
------	---------	---------	------



**Tube type: Monovette. Shape Square**

1.1-1.4ml	8 x 82	RU.882	3300
2.7-3ml	11 x 82	RU.1182	3300
2.6-2.9ml	13 x 81	RU.1381	3500
4.5-5ml	11 x 108	RU.11108	3500
7.5-8.2ml	13 x 106	RU.13106	3500
4.5-5ml	15 x 92	RU.1592	3500
9-10ml	16 X 108	Not required	3500



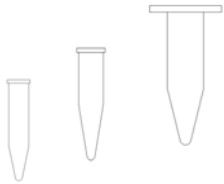
**Tube type: Vacutainer. Shape: Round**

1.6-5ml	13 x 82	RU.1382	3300
4-7ml	13 x 106	RU.13106	3500
7-9ml	15 x 92	RU.1592	3500
8.5-10ml	16 x 108	Not required	3500



**Tube type: Vacuette. Shape: Round**

1.6-5ml	13 x 82	RU.1382	3300
4-7ml	13 x 106	RU.13106	3500
7-9ml	15 x 92	RU.1592	3500
8.5-10ml	16 x 108	Not required	3500

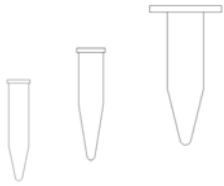
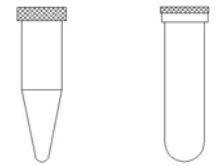


## Reducers Fixed angle rotor BRK5404 Pack of 4 (tubes per rotor 4)

**Capacity**                      **Size. mm**                      **Part Number**    **Rcf (G) max**

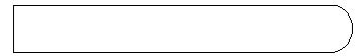
**Tube type: Micro with cap. Shape: Point**

0.2ml	6 x 20	RSB.620	2250
0.4ml	6 x 30	RSB.630	2410
0.5ml	8 x 20	RSB.820	2250
1.5ml	11 x 38	RSB.1138	2540
2.0ml	11 x 38	RSB.1138	2540



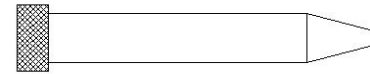
**Tube type: Plain no cap. Shape: Round**

1ml	6 x 45	RSB.645	2660
3ml	10 x 60	RSB.1060	2940
5ml	12 x 75	RSB.1275	3180
6ml	12 x 82	RSB.1282	3300
7ml	12 x 100	RSB.12100	3500
9/10ml	14 x 100	RSB.14100	3500
15ml	17 x 100	RSB.17100	3500
25ml	24 x 100	RSB.24100	3500



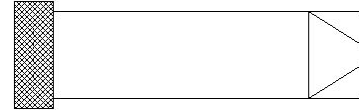
**Tube type: Falcon with cap. Shape: Point**

15ml	17 x 120	RUB.17120	3500
50ml	29 x 115	Not required	3500



**Tube type: Falcon with cap. Shape: Square**

12ml	17 x 100	RUB.17100	3500
15ml	17 x 120	RUB.17120	3500
25ml	25 x 90	RUB.2590	3500
30ml	25 x 110	RUB.25110	3500
50ml	29 x 115	Not required	3500



**Tube type: Nalgene. Oakridge with cap. Shape: Round**

10ml	15 x 80	RUB.1580	3300
30ml	26 x 95	RUB.2695	3500
50ml	29 x 107	Not required	3500



**Tube type: Monovette. Shape Square**

1.1-1.4ml	8 x 82	RUB.882	3300
2.7-3ml	11 x 82	RUB.1182	3300
2.6-2.9ml	13 x 81	RUB.1381	3300
4.5-5ml	11 x 108	RUB.11108	3500
7.5-8.2ml	13 x 106	RUB.13106	3500
4.5-5ml	15 x 92	RUB.1592	3500
9-10ml	16 X 108	RUB.16108	3500



**Tube type: Vacutainer. Shape: Round**

1.6-5ml	13 x 82	RUB.1382	3300
4-7ml	13 x 106	RUB.13106	3500
7-9ml	15 x 92	RUB.1592	3500
8.5-10ml	16 x 108	RUB.16108	3500



**Tube type: Vacuette. Shape: Round**

1.6-5ml	13 x 82	RUB.1382	3300
4-7ml	13 x 106	RUB.13106	3500
7-9ml	15 x 92	RUB.1592	3500
8.5-10ml	16 x 108	RUB.16108	3500



# 10 Small Swing out Rotor 1520 Rcf (G)



## BRK5508S Rotor Buckets supplied (set of 8)

Capacity	8 x 5ml
Tube size	13 x 82mm max
Minimum Rcf (G)	10
Maximum Rcf (G)	1,520
Maximum Speed	4,000
Radius max cms	8.5
Sample tube angle °	0
Acceleration time (secs)	15
Deceleration time (secs)	15
Autoclavable (frequency)	121°C (10)
Minimum Temperature @ 23°C	4°C

Ideal for small Blood samples or 4.5ml general samples

## Reducers Swing out rotor BRK5508S Pack of 4 (Tubes per rotor 8)

**Capacity**                      **Size. mm**                      **Part Number**    **Rcf (G) max**

### Tube type: Micro with cap. Shape: Point

0.2ml	6 x 20	RS.620	800
0.4ml	6 x 30	RS.630	1000
0.5ml	8 x 20	RS.820	800
1.5ml	11 x 38	RS.1138	1100
2.0ml	11 x 38	RS.1138	1100

### Tube type: Plain no cap. Shape: Round

1ml	6 x 45	RS.645	1300
3ml	10 x 60	RS.1060	1520
5ml	12 x 75	RS.1275	1520
6ml	12 x 82	RS.1282	1520

### Tube type: Nalgene. Oakridge with cap. Shape: Round

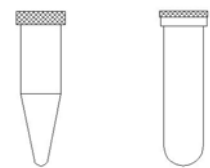
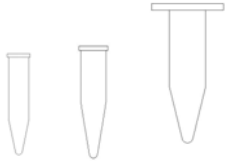
10ml	15 x 80	RS.1580	1520
------	---------	---------	------

### Tube type: Monovette. Shape Square

1.1-1.4ml	8 x 82	RU.882	1520
2.7-3ml	11 x 82	RU.1182	1520
2.6-2.9ml	13 x 81	RU.1381	1520

### Tube type: Vacutainer. Shape: Round

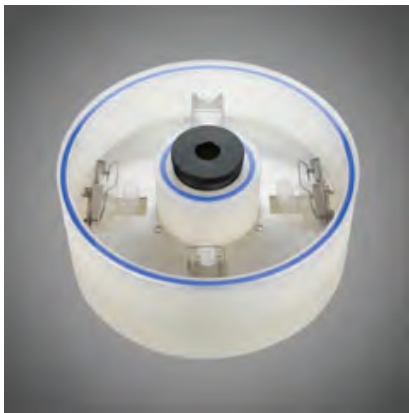
1.6-5ml	13 x 82	RU.1382	1520
---------	---------	---------	------



# Cytology rotor to 550Rcf (G)

11

Cytology and Histology work *Refrigerated model only*



Lid is in blue

Rotor	4940 (4 Place)
Rotor type	4 x 0.2 to 6ml
Tube size max	Single or double
Minimum Rcf (G)	10
Maximum Rcf (G)	550
Maximum Speed	2,500
Radius max cms	7.9
Sample tube angle °	0
Acceleration time (secs)	20
Deceleration time (secs)	20
Autoclavable (frequency)	121°C (10)
Minimum Temperature @ 23°C	4°C

Cytology rotor includes rotor, sealed lid, clips, 24 holders with filter card & 100 slides

## Accessories



**4446**

Double sample holder with card (up to 1ml)



**4444**

Single sample holder with card (up to 1ml)



**4600**

Single sample holder with card (up to 6ml)



**4462**

Stainless steel clips



# 12 Micro Ambient Centrifuge and one rotor.

(one rotor use only).

DUAL MODEL

Micro tube rotors see page 5

Part nos. 230v 50/60Hz	Part nos. 110v 60Hz	Rotor. 22,000 Rcf (G)	
K115A	1.K115A	BRK5424	24 x 2ml
K115B	1.K115B	BRK5436	36 x 0.5ml
K115C	1.K115C	BRK5448	48 x 0.2ml
K115D	1.K115D	BRK5494	4 x PCR
K115E	1.K115E	BRK5463	36 x 2ml
K115F	1.K115F	BRK5464	18 x 2ml & 18 x .5ml



Haematocrit rotor page 6

Part nos. 230v 50/	Part nos. 110v 60Hz	Rotor. 15,800 Rcf (G)	
K113A	1.K113A	BRK5401	24 x capillary 12 x 2ml



Fixed angle rotors page 7

Part nos. 230v 5	Part no. 110v 60Hz	Rotor. 3,500 Rcf (G)	
K106A	1.K106A	BRK5408	8 x 15ml
K106B	1.K106B	BRK5404	4 x 50ml
K106C	1.K106C	BRK5407	4 x 15ml
		6,100 Rcf	4 x 10ml



Swing out rotor page 10

Part nos. 230v 50/	Part nos. 110v	Rotor. 1520 Rcf (G)	
K104SO	1.K104SO	5508S	8 x 4.5ml



Cytology rotor page 11

Part nos. 230v 50/60Hz	Part nos. 110v 60Hz	Rotor. 550Rcf (G)	
K104CYT	1.K104CYT	4420	4 x dual



HS Fixed angle rotors

Part nos. 230v 50/60Hz	Part nos. 110v 60Hz	Rotor.
------------------------	---------------------	--------

Not available

# Micro Refrigerated centrifuge and one rotor 13

(one rotor use only)

DUAL MODEL

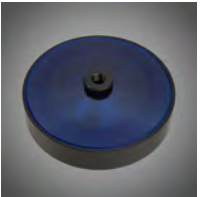
Micro tube rotors see page 5

Part nos. 230v 50/60Hz	Part nos. 110v 60Hz	Rotor. 22,000 Rcf (G)	
K115RA	1.K115RA	BRK5424	24 x 2ml
K115RB	1.K115RB	BRK5436	36 x 0.5ml
K115RC	1.K115RC	BRK5448	48 x 0.2ml
K115RD	1.K115RD	BRK5494	4 x PCR
K115RE	1.K115RE	BRK5463	36 x 2ml
K115RF	1.K115RF	BRK5464	18 x 2ml & 18 x .5ml



Haematocrit rotor page 6

Part nos. 230v 50/60Hz	Part nos. 110v 60Hz	Rotor. 15,800 Rcf (G)	
K113RA	1.K113RA	BRK5401	24 x capillary 12 x 2ml



Fixed angle rotors page 7

Part nos. 230v 50/60Hz	Part no. 110v 60Hz	Rotor. 3,500 Rcf (G)	
K106RA	1.K106RA	BRK5408	8 x 15ml
K106RB	1.K106RB	BRK5404	4 x 50ml
K106RC	1.K106RC	BRK5407	4 x 15ml
		<b>6,100 Rcf</b>	4 x 10ml



Swing out rotor page 10

Part nos. 230v 50 Hz	Part nos. 110v 60Hz	Rotor. 1520 Rcf (G)	
K104RSO	1.K104RSO	5508S	8 x 4.5ml



Cytology rotor page 11

Part nos. 230v 50/60Hz	Part nos. 110v 60Hz	Rotor. 550Rcf (G)	
K104RCYT	1.K104RCYT	4420	4 x dual



HS Fixed angle rotors

Part nos. 230v 50/60Hz	Part nos. 110v 60Hz	Rotor.
------------------------	---------------------	--------

Not available

NOTE. Domed blue lids, as shown, available on refrigerated centrifuges only



# WolfLabs

**Pricing on any accessories shown can be found by keying the part number into the search box on our website.**

The specifications listed in this brochure are subject to change by the manufacturer and therefore cannot be guaranteed to be correct. If there are aspects of the specification that must be guaranteed, please provide these to our sales team so that details can be confirmed.

**[www.wolflabs.co.uk](http://www.wolflabs.co.uk)**

**Tel : 01759 301142**

**Fax : 01759 301143**

**[sales@wolflabs.co.uk](mailto:sales@wolflabs.co.uk)**

Please contact us if this literature doesn't answer all your questions.